

LARGE AREA SURFACE PROBE

THE CHALLENGE: COLOR MONITORING FOR HARD OR FIRM SURFACES

Maintaining color consistency through production of materials with large surface area demands precision monitoring of a specific color range. It requires an instrument sensitive and sophisticated enough to illuminate and measure reflected light while ignoring the glare of glossy or shiny surfaces to accurately measure true color.

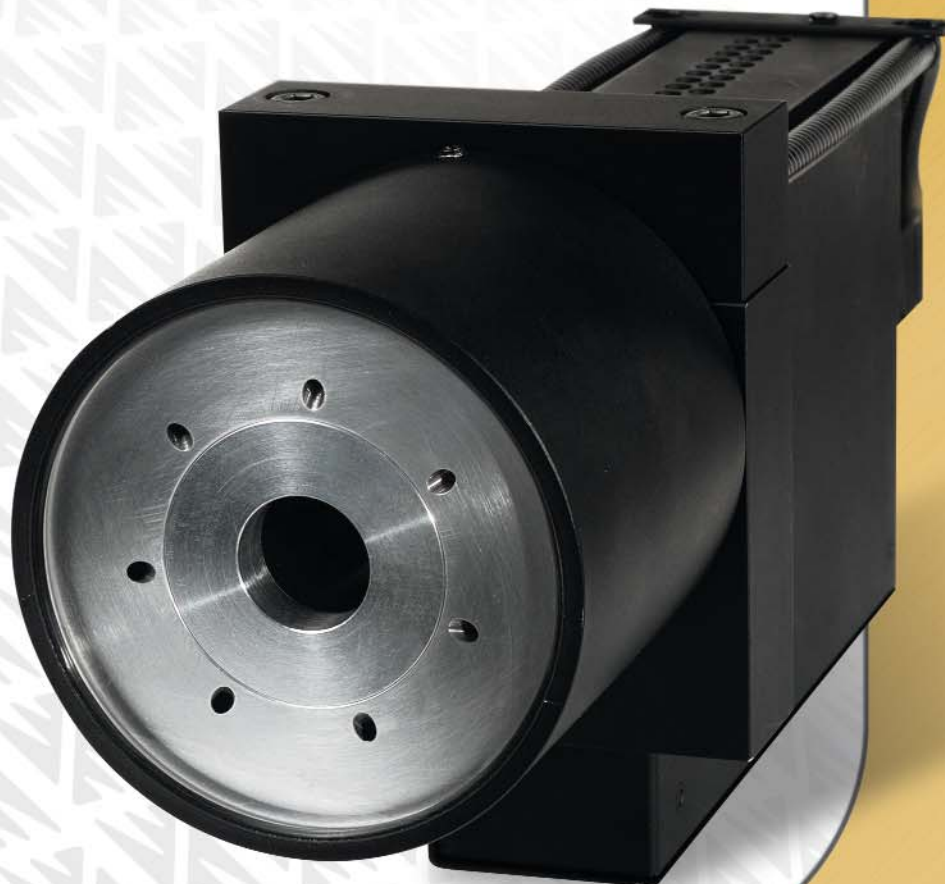
THE SOLUTION: THE EQUITECH LARGE AREA SURFACE PROBE

Built specifically for measuring color values over large surfaces, this probe combines illumination with detection to measure reflected light and precisely monitor color. The sophisticated design features built-in rejection of specular reflections off glossy surfaces and insensitivity to embossing of the product.

THE INNOVATION:

- A built-in xenon flash lamp illuminates the sample 0 degrees from surface normal
- Seven detection fibers spaced evenly around the probe are positioned at 45-degree angles from surface normal to detect reflected light
- A second set of circumferential fibers detect reflected light from an internal white surface; this serves as a real-time compensation channel for the source lamp

Find out how the Equitech Large Area Surface Probe can improve the precision and accuracy of your color monitoring. Visit www.equitechintl.com, or call 803-652-7270 to order.



equitechintl.com • 803-652-7270



SPECIFICATIONS

GENERAL:

Sensing Region	Max. sensitivity @ 25.4 mm +/- 2.54 mm
Lens/Window Material	Borosilicate glass
Numerical Aperture	0.22 NA
Spot Size	19.05 mm (0.75") diameter
Optical Fiber Type	NIR two bundles of 7 fibers around 1 fiber 200/220 silica on silica†
Fiber Packaging	PVC-coated (80°C) armored fiber bundle
Fiber Length	3 m standard†
Fiber Termination	SMA 905
Source	Xe flash (2-ms flash period)
Standoff Distance	25.4 mm

PHYSICAL:

Body Materials	Aluminum
Space Requirement	135.38 mm L x 82.55 mm W x 317.5 mm H (5.33" L x 3.25" W x 12.5" H)
Temperature Range	0° to 50°C
Maximum Pressure	1 bar (14.7 psi)
Input Power	24 V DC supplied by OCS via 9 - pin D subminiature connector

† Other fiber sizes and lengths available upon request.



903 Main Street South • New Ellenton, SC 29809
Ph: 803-652-7270 • Fax: 803-652-8888 • www.equitechintl.com